

SPARE PARTS CATALOGUE



TERMS AND CONDITIONS

GENERAL FREIGHT AND PAYMENT TERMS

Freight Charges

Freight charges are not included in the listed prices and will vary depending on the size of the order. The cost of shipping will be calculated and confirmed upon receipt of the order.

Delivery Times

Delivery times may vary significantly depending on the destination country. All shipments are made at the customer's risk.

BANK TRANSFER INFORMATION

Payment via bank transfer is required for all orders unless otherwise agreed upon. Detailed payment information will be provided on the invoice.

Danske Bank, konto 4387-3464003606
IBAN DKK: DK35 3000 3464 0036 06
IBAN EUR: DK73 3000 3675 7995 12
SWIFT: DABADKKK

SPARE PARTS ORDERS

To ensure prompt processing, please include the following details with all spare part orders:

- Official company details (for new customers)
- Purchase Order (PO) number
- Shipping address
- Contact details

Most standard spare parts are in stock, allowing for same-day dispatch. Please note:

Minimum Order Value is €50. Orders under this amount will be rounded up to €50.

Shipping Policy

Orders are typically dispatched the same day we receive them, provided payment confirmation (bank transfer receipt) is received. Shipping dates will be confirmed in the order confirmation, and a notification will be sent once your goods are dispatched.

Invoices & Payment

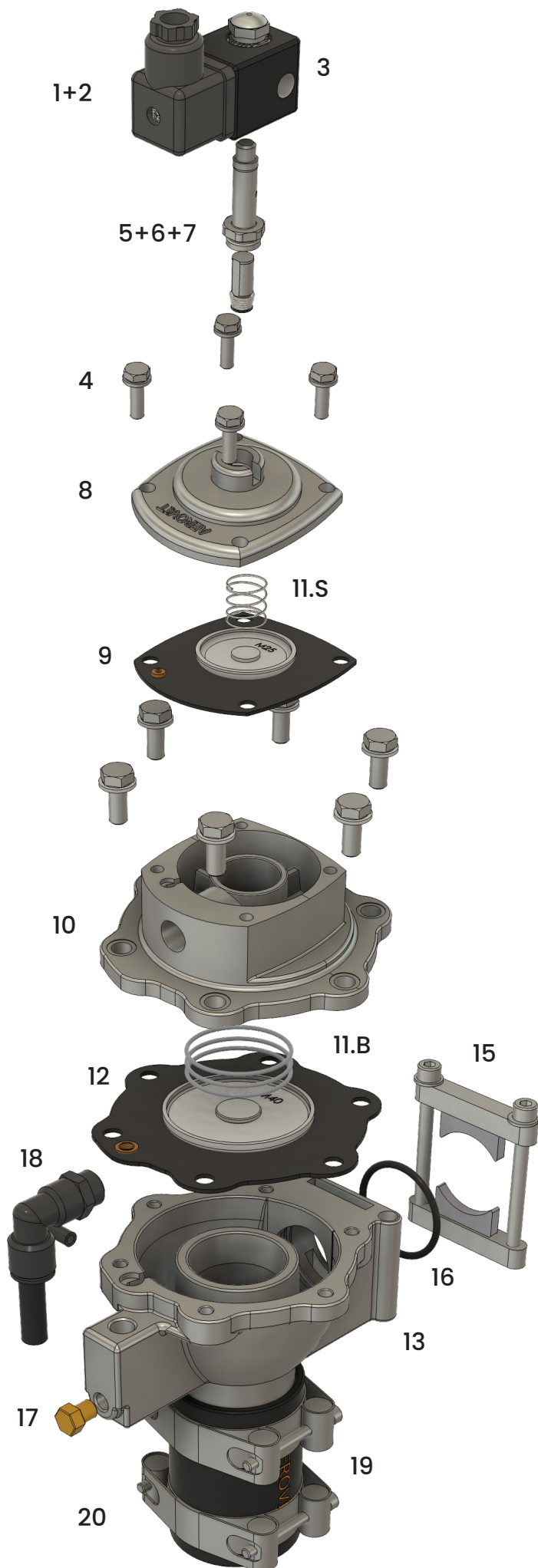
All invoices must be paid via bank transfer to Aerovit A/S, with payment details provided on the invoice. Payment is required before shipment unless a company account has been pre-approved.



CUSTOMER SUPPORT

For any questions or assistance with your order, please contact us by:

Email: sales@aerovit.dk
Phone: +45 86 92 44 22



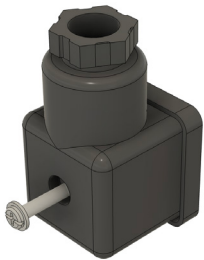
Parts

1728	(1+2)	Connector + gasket
1722	(3)	Coil 24V AC
1724	(3)	Coil 24V DC
1725	(3)	Coil 230V
1729	(4)	Bonnet screws small
1726	(5+6+7)	Core assembly & solenoid base
1720	(8)	Pilot valve bonnet
1717		Spare part kit
	(9)	Diaphragm Pilot
	(11.S)	Small Spring
	(12)	Diaphragm Main
	(11.B)	Big Spring
1721	(10)	Main valve bonnet
1760	(13)	Valve body
1729-1	(14)	Bonnet screws large
1732-3	(15)	Quick mount unit
1433-4	(16)	O-ring
1758	(17)	Nozzle (filter)
1253-2	(18)	Swivel angle with tube
1321	(19)	Heat resistant hose
1303	(20)	Hose clamps

Valve Sets

1754-1	Valve unit complete with coil 24V AC , hose and clamps
1755-1	Valve unit complete with coil 24V DC , hose and clamps
1756-1	Valve unit complete with coil 230V , hose and clamps
1754-2	Valve unit complete with coil 24V AC
1755-2	Valve unit complete with coil 24V DC
1756-2	Valve unit complete with coil 230V
1757-2	Valve unit A40 1½ + Quick mount

Aerovit A40 Parts

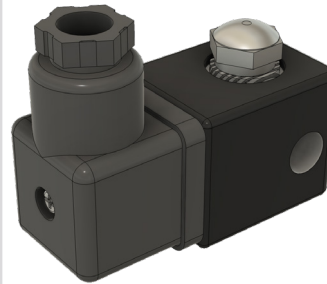


CONNECTOR

Content:

- Connector
- Gasket
- Screw

Manual No. 1728
Material: Plastic, rubber, steel

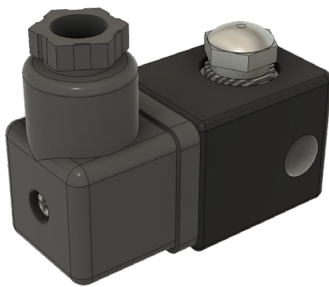


COIL 24V AC WITH CONNECTOR

Content:

- Coil
- Connector
- Coil nut
- Coil nut o-ring

Manual No. 1722
Material: Rubber, nylon fiberglass-reinforced

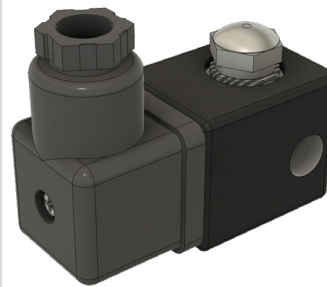


COIL 24V DC WITH CONNECTOR

Content:

- Coil
- Connector
- Coil nut
- Coil nut o-ring

Manual No. 1724
Material: Rubber, nylon fiberglass-reinforced

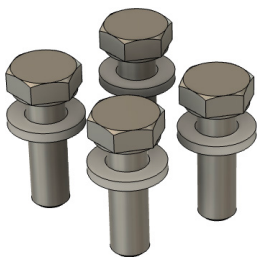


COIL 230V WITH CONNECTOR

Content:

- Coil
- Connector
- Coil nut
- Coil nut o-ring

Manual No. 1725
Material: Rubber, nylon fiberglass-reinforced

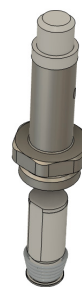


SMALL BONNET SCREWS

Content:

- 4 bonnet screws
- 4 washers

Manual No. 1729
Material: Stainless steel



CORE ASSEMBLY & SOLENOID BASE

Content:

- Core assembly
- Solenoid base
- Spring

Manual No. 1726
Material: Stainless steel

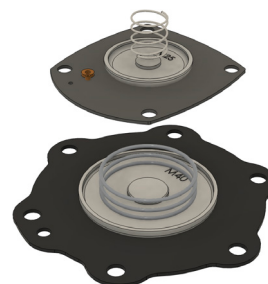


PILOT VALVE BONNET

Content:

- Pilot valve bonnet

Manual No. 1720
Material: Die-cast aluminium

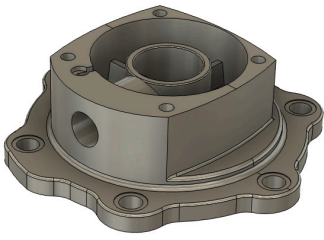


SPARE PART KIT

Content:

- Diaphragm pilot
- Small spring
- Diaphragm main
- Big spring

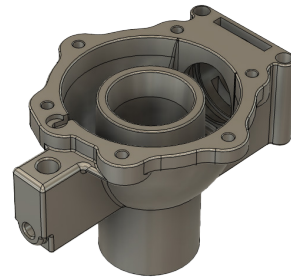
Manual No. 1717
Material: Neoprene rubber with nylon reinforcement, steel



MAIN VALVE BONNET

Content:
• Main valve bonnet

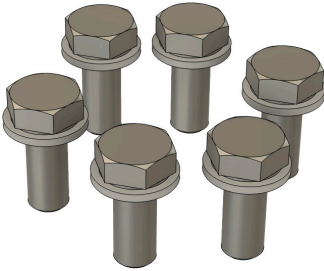
Manual No. 1721
Material: Die- cast aluminium



VALVE BODY

Content:
• Valve body

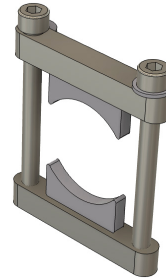
Manual No. 1760
Material: Die- cast aluminium



LARGE BONNET SCREWS

Content:
• 6 large bonnet screws
• 6 washers

Manual No. 1729-1
Material: Stainless steel



QUICK MOUNT UNIT

Content:
• 2 half-moons
• Bracket set
• 2 steel bolts
• 2 flat washers

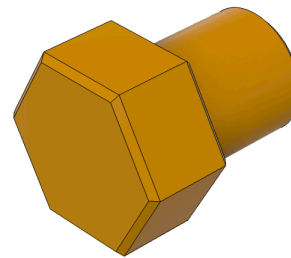
Manual No. 1732-3
Material: Steel



O-RING

Content:
• one O-ring

Manual No. 1733-4
Material: Rubber



NOZZLE (FILTER)

Content:
• One nozzle (filter)

Manual No. 1758
Material: Brass CW, stainless steel



SWIVEL ANGLE WITH TUBE

Content:
• Swivel angle
• Tube

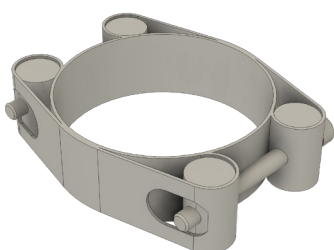
Manual No. 1253-2
Material: Plastic



HEAT RESISTANT HOSE

Content:
• Hose

Manual No. 1321
Material: Lining: EPDM, black smooth

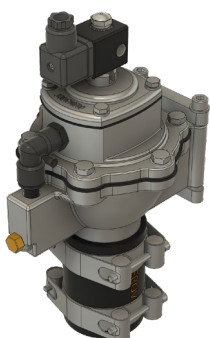


HOSE CLAMP

Content:
• hose clamp

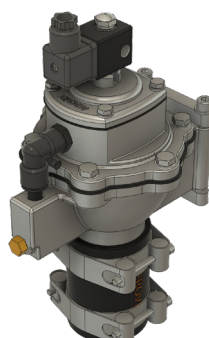
Manual No. 1303
Material: Galvanized steel (W)

Aerovit A40 Valve Sets



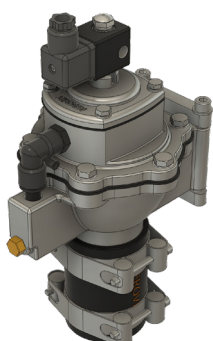
**VALVE UNIT
COMPLETE WITH
24V AC, HOSE AND
CLAMPS**

Manual No. 1754-1



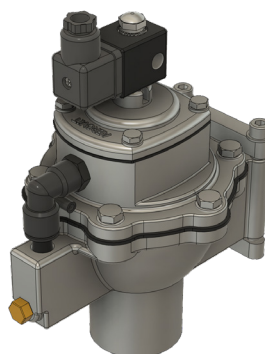
**VALVE UNIT
COMPLETE WITH
24V DC, HOSE AND
CLAMPS**

Manual No. 1755-1



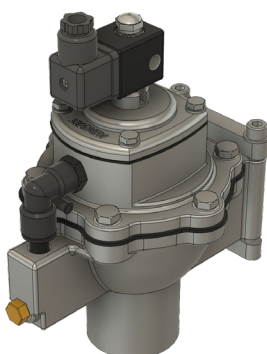
**VALVE UNIT
COMPLETE WITH
COIL 230V, HOSE
AND CLAMPS**

Manual No. 1756-1



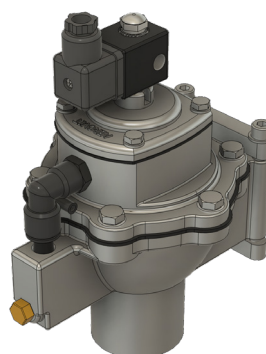
**VALVE UNIT
COMPLETE WITH
COIL 24V AC**

Manual No. 1754-2



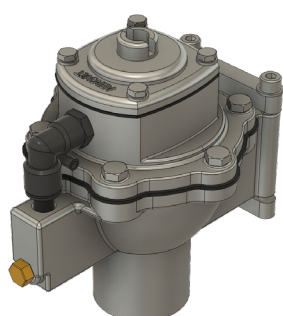
**VALVE UNIT
COMPLETE WITH
COIL 24V DC**

Manual No. 1755-2



**VALVE UNIT
COMPLETE WITH
COIL 230V**

Manual No. 1756-2



**VALVE UNIT
A40 1½ + QUICK
MOUNT**

Manual No. 1757-2