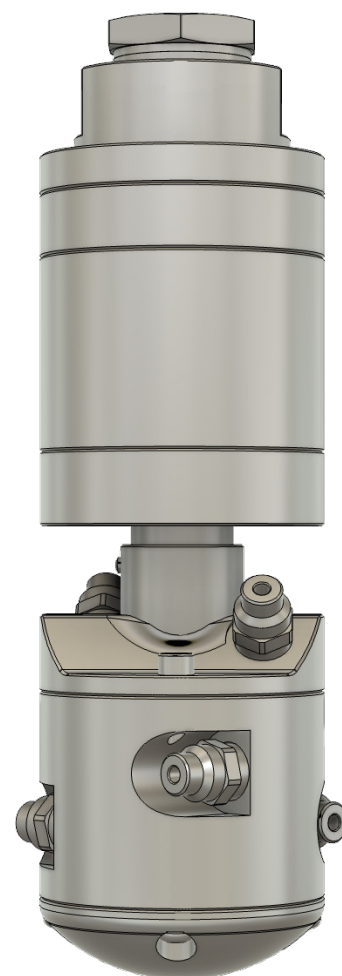


Aerovit SC-Jet Nozzle Head

The Aerovit SC-Jet Nozzle Head is engineered for superior performance, featuring six specially designed nozzles, that delivers precise laminar water jets. These jets operate effectively in both horizontal and vertical directions, with each jet capable of projecting water over a distance of more than 5 meters. This extensive range ensures comprehensive cleaning coverage, significantly reducing the number of inlet holes required for efficient operation.

The Aerovit SC-Jet Nozzle Head is available in both counterclockwise (CCW) and clockwise (CW) rotation options, thus minimizing the "shadow" effect during the cleaning of boiler tubes and ensuring thorough and effective maintenance.



Specifications:	
Material:	AISI-304
Weight:	3.5 kg.
Temperature:	Max. 1250°C when water applied.
Water pressure:	1,5-2 bar.
Water quality:	Free from impurities (<0,2mm) Neutral pH (pH 6,5-7,5) Max. temperature 30°C.
Connection:	Female 1" BSP
Connection steel hose:	Male 1" BSP
Nozzle head injection hole:	100 mm.
Nozzles:	6 nozzles (Possibility to add 2 extra nozzles angled 45° downwards).
Length of nozzle head:	294,8 mm.

Testing the Aerovit SC-Jet Nozzle Head

It is possible to mount the SC-Jet Nozzle Head on all brands of shower cleaning solutions to test the efficiency. Check the connections. When using the Aerovit SC-Jet Nozzle Head the parameters have to be the set as following:

Water pressure: 2 bar

Water flow: 3 m³/h

When using the Aerovit SC-Jet Nozzle Head be aware of the temperatures, as you most likely will experience a larger drop in temperatures with the same number of cleanings. We recommend, that the cleanings are initiated according to temperatures rather than according to a scheme which doesn't give a fixed number of cleanings per day.

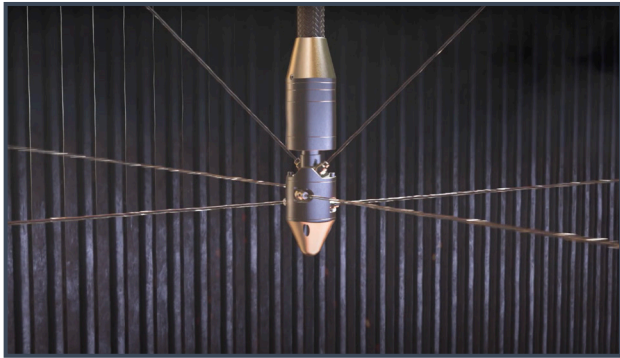
Cone for the Aerovit SC-Jet Nozzle Head

When purchasing the Aerovit SC-Jet Nozzle Head the cone is an accessory and must be purchased as an option.

The advantage of adding the cone to the nozzle head is, that when rolling the hose onto the hose reel. The nozzle head has no edges, that could cause it to get stuck at the inlet holes.

Other advantages are:

- Ensures a smooth retraction of the hose
- Reduced wear on the hose
- Improved durability



Cone for the Aerovit
SC-Jet Nozzle Head



Nozzle head
with the cone

